

LA ROCHE-POSAY.

We are the brand of choice for dermatologists.

- Hypoallergenic, non comedogenic skincare
- Highly concentrated dermatological active ingredients
- With soothing anti-oxidant thermal spring water
- Ingredients strictly selected to be compliant with sensitive skin specificities
- All products tested on the most sensitive skins
- Packaging to minimise possible bacterial contamination
- Quality guaranteed by use-of-date

AVAILABLE AT SELECTED:

Guardian Pharmacies ■ Watsons Pharmacies ■ Unity Pharmacies ■ National Skin Centre ■ Changi General Hospital ■ Singapore General Hospital ■ Tan Tock Seng Hospital ■ Derma Center (Westgate Mall #02-33)

L'ORÉAL SINGAPORE PTE LTD

3 Killiney Road #09-01/06 Winstland House 1 Singapore 239519
Tel 1800-838-3388 (toll-free line) Email LRP@sg.loreal.com
www.laroche-posay.com



www.facebook.com/LRPSG



LA ROCHE-POSAY
LABORATOIRE DERMATOLOGIQUE

A better life for sensitive skin.

Recommended by
over 25,000 dermatologists.

A better life for sensitive skin



Recommended by over 25,000 dermatologists.



A better life for sensitive skin.



With soothing and anti-oxidant La Roche-Posay Thermal Spring Water.



Proven efficacy. Clinically demonstrated tolerance.

For over 30 years, La Roche-Posay has worked with dermatologists throughout the world to invent skincare and makeup products that meet their needs and requirements.

With over 30 years' of research experience and 25 patents, we are now a leading player in the development of tolerant and safe products formulated for sensitive skin.

At the heart of our brand is our unique thermal spring water which is used in every La Roche-Posay skincare product. The efficacy and extreme tolerance properties of the water differentiate the brand and give it its unquestionable credibility.

La Roche-Posay's products incorporate state-of-the-art dermatological active agents. Their efficacies are evaluated in clinical tests against a placebo, conducted in international dermatology departments according to benchmark scientific criteria.

A Unique Thermal Water with Therapeutic Properties

- Healing
- Soothing and relieving
- Anti-free radical
- Anti-irritation



UNIQUE COMPOSITION

La Roche-Posay Thermal Spring Water contains a high concentration of Selenium (60µg/litre), an essential anti-oxidant for cell metabolism. The beneficial properties of the thermal spring water is demonstrated by clinical studies published in scientific journals.



THERMAL CENTER IN FRANCE

Our therapeutic thermal water is the pillar of supporting treatments administered at government-endorsed La Roche-Posay Thermal Center since 1897. Today, it is the number 1 Thermal Dermatology Center in Europe, treating nearly 10,000 patients each year.

SIZES: 50ml / 150ml / 300ml



RECOMMENDED DAILY SKIN CARE REGIME

SKIN NEEDS	CLEANSE	TONE	TREATMENT	MOISTURISE
Extreme Sensitive Skin	<p>TOLERIANE Dermo-Cleanser</p> <p>TOLERIANE Softening Foaming Gel (Normal to Combination Skin)</p> <p>TOLERIANE Purifying Foaming Cream (Combination to Oily Skin)</p>	<p>EAU THERMALE Thermal Spring Water</p>		<p>TOLERIANE ULTRA (Normal to Dry Intolerant Skin)</p> <p>TOLERIANE ULTRA LIGHT (Combination to Oily Intolerant Skin)</p> <p>TOLERIANE (Normal to Combination Skin)</p> <p>TOLERIANE FLUIDE (Combination to Oily Skin)</p>
Acne-Care & Oil Control	<p>EFFACLAR Purifying Foaming Gel (Oily Acne Prone Skin)</p> <p>EFFACLAR H Foam (Oily Dried-Out Skin)</p>	<p>PHYSIOLOGICAL Soothing Toner</p>	<p>EFFACLAR DUO (Young Oily Skin)</p> <p>EFFACLAR K (Adult Oily Skin)</p> <p>EFFACLAR A.I. (Targeted Spots)</p>	<p>EFFACLAR MAT (Oily, Shiny Skin)</p> <p>EFFACLAR H (Oily Dried-Out Skin)</p>
Intense Hydration	<p>Choose a cleanser in accordance with your skin type</p>	<p>EAU THERMALE Thermal Spring Water</p>	<p>HYDRAPHASE INTENSE Eyes</p> <p>HYDRAPHASE INTENSE Serum</p> <p>HYDRAPHASE INTENSE Masque</p>	<p>HYDRAPHASE INTENSE Light</p>
Whitening	<p>SENSI WHITE Foaming Cream</p>	<p>SENSI WHITE Lotion</p>	<p>SENSI WHITE Essence</p>	<p>SENSI WHITE Cream (Normal to Dry Skin)</p> <p>SENSI WHITE Emulsion (Combination to Oily Skin)</p>
Anti-Aging	<p>Choose a cleanser in accordance with your skin type</p>	<p>PHYSIOLOGICAL Soothing Toner</p>	<p>ACTIVE C Eyes</p> <p>ACTIVE C (Normal to Combination Skin)</p> <p>REDERMIC [C] Eyes</p> <p>REDERMIC [C] (Normal to Combination Skin)</p>	<p>Choose a moisturiser in accordance with your needs</p>

■ EXTREME UV PROTECTION

PROTECT YOURSELF FROM UVB RAYS,
BUT MORE IMPORTANTLY, FROM UVA RAYS

UVB

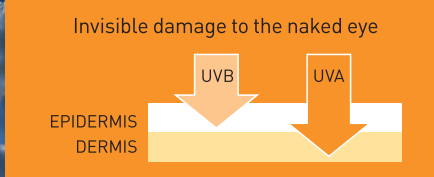
B for
Bronzing or **B**urn

UVB rays cause tanning & sunburn

UVA

A for
'Sun Allergies' or Aging

UVA rays penetrate more deeply into the skin. They accelerate skin aging and can cause skin to become sun-reactive (redness, itching, polymorphous light eruption) and trigger pigment disorders (melasma, brown spots).



Both UVA and UVB rays can cause damage at the cellular level and damage the DNA. In the long term, repeated DNA damage can lead to the development of skin cancer.

Such DNA damage can be prevented by the use of a sunscreen with a filtering system reinforced against UVA and high SPF.

LEARN HOW TO FIND YOUR WAY IN THE MAZE OF UV PROTECTION INDEXES

PPD
Persistent Pigment Darkening

Efficacy index of protection from UVA rays



PA
PA is a Japanese classification of UVA protection.

It is also used all over Asia.



SPF
Sun Protection Factor

Efficacy against sunburn that are mainly caused by UVB.



UVA

The UVA logo indicates a UVA protection level that complies with a EU recommendation SPF/PPD* ≤ 3.

SUN PROTECTION	FACE	BODY
Extreme UV Protection	ANTHELIOS XL Extreme Fluid SPF 50+, PPD 38 (Normal to Combination Skin)	ANTHELIOS W Gel SPF 30, PPD 19
	ANTHELIOS XL Cream SPF 50+, PPD 42 (Normal to Dry Skin)	ANTHELIOS XL Smooth Lotion SPF 50+, PPD 34
	ANTHELIOS AC Matte Extreme Fluid SPF 30, PPD 25 (Acne-Prone Skin)	ANTHELIOS XL Extreme Fluide SPF 50+, PPD 32
	ANTHELIOS XL Dry Touch Gel-Cream SPF 50+, PPD 31 (Combination to Oily Skin)	ANTHELIOS DERMO-PEDIATRICS Lotion SPF 50+, PPD 39
	ANTHELIOS XL Stick SPF 50+, PPD 26 (For Sensitive Areas)	
Daily UV Protection	UVIDEA XL Extreme Fluide SPF 50, PA+++ PPD15 (Combination to Oily Skin)	
	UVIDEA XL Melt-In Cream SPF 50, PA+++ PPD18 (Normal to Dry Skin)	
	UVIDEA XL BB Melt-In BB Cream SPF 50, PA+++ PPD18	
	UVIDEA Aqua Fresh Gel SPF 30, PA++++ PPD18 (Combination to Oily skin)	



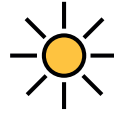
■ EXTREME UV PROTECTION

ANTHELIOS

The highest protection for sensitive or sun allergy-prone skin

» With NEW Mexoplex®

- To ensure broad-spectrum UV protection (UVA & UVB rays) • Photostable • Paraben-free
- Fragrance-free • Non-comedogenic • Tested under dermatological control



SPF 50+
PPD 39

0% PERFUME
PARABEN
FRAGRANCE

REDUCED CONTENT OF
CHEMICAL
FILTERS



face

For normal to combination skin

ANTHELIOS XL
Extreme Fluid
SPF 50+, PPD 38

Ultra-light texture.
Non-greasy effect.
Water-resistant
50 ml



Also available in Tinted Fluid (PPD 34)

For normal to dry skin

ANTHELIOS XL
Cream
SPF 50+, PPD 42

Moisturising.
Extreme comfort.
Water-resistant
50 ml



Also available in Tinted Cream (PPD 39)

children

ANTHELIOS
DERMO-PEDIATRICS
Lotion
SPF 50+, PPD 39

Easy application.
Very water-resistant texture
100 ml



NEW



For acne-prone skin

ANTHELIOS AC
Matte Extreme Fluid
SPF 30, PPD 25

Ultra-light texture.
Non-greasy effect.
Water-resistant
50 ml



For combination to oily skin

ANTHELIOS XL
Dry Touch Gel-Cream
SPF 50+, PPD31

Instant absorption.
Ultra-matt finish.
Water-resistant
50 ml



■ DAILY UV PROTECTION

UVIDEA

Tested on Asian sensitive skin

The daily photo-protection to combat brown spots and fine lines from daily UV exposure



For sensitive areas

ANTHELIOS XL
Stick
SPF 50+, PPD 26
Water-resistant
9 g



body

ANTHELIOS W
Gel
SPF 30, PPD 19

Non-greasy.
Very water-resistant
100 ml



face

For combination to oily skin

UVIDEA XL
Extreme Fluid
SPF 50, PA+++ PPD 15

Light and fresh
'Shaka' fluid texture
40 ml



For normal to dry skin

UVIDEA XL
Melt-In Cream
SPF 50, PA+++ PPD 18

Moisturising, velvety
texture
30 ml



Available in Natural & Porcelain

ANTHELIOS XL
Smooth Lotion
SPF 50+, PPD 34

Extreme comfort.
Very water-resistant
100 ml



ANTHELIOS XL
Extreme Fluid
SPF 50+, PPD 32

Ultra-light texture.
Non-greasy effect.
Very water-resistant
125 ml



For imperfect skin

UVIDEA XL BB
Melt-In BB Cream
SPF 50, PA+++ PPD 18

Light fluid texture
Complexion is unified
after application
30 ml



For combination to oily skin

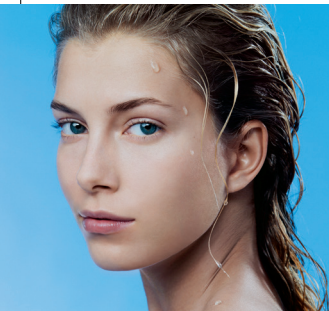
UVIDEA
Aqua Fresh Gel
SPF 30, PA++++ PPD 18

Ultra-light,
refreshing texture
30 ml



NEW

Available in 2 shades [01 & 02]



■ pH BALANCE CLEANSING

PHYSIOLOGICAL CLEANSERS

Gently cleanses sensitive skin while maintaining the physiological pH of human skin



■ INTOLERANT OR ALLERGIC SKIN

TOLERIANE

Complete program for intolerant and allergic skin

0% Fragrance
0% Preservatives
0% Alcohol
0% Paraben



cleanse

PHYSIOLOGICAL Cleansing Gel

Gently removes make-up
200ml



PHYSIOLOGICAL Foaming Water

Gently cleanses make-up from sensitive skin
150ml



cleanse

TOLERIANE Dermo-Cleanser (Soap-free)

Gently removes make-up and residue. Light, smooth lotion
200 ml



For normal to combination skin

TOLERIANE Softening Foaming Gel

Cleanses while helping to protect. Leaving skin supple
150 ml



PHYSIOLOGICAL Ultra-fine Scrub

Effectively refine skin's texture by stimulating cellular renewal
50ml



tone

PHYSIOLOGICAL Soothing Toner

Non-greasy, leaving skin perfectly toned and soothed
200ml



For combination to oily skin

TOLERIANE Purifying Foaming Cream (Soap-based)

Safely cleanses delicate facial skin. Glycerin prevents over-drying
125 ml



■ EYE MAKE-UP REMOVER

RESPECTISSIME

Paraben-free waterproof eye make-up remover

cleanse

RESPECTISSIME Waterproof Eye Makeup Remover

Gentle make-up remover for sensitive eyes.
Specific for waterproof make-up
125 ml



moisturise

For ultra sensitive & allergic normal / dry skin
TOLERIANE ULTRA

Intensively reduces skin sensitivity, day after day
40 ml



For ultra sensitive & allergic combination / oily skin **NEW**
TOLERIANE ULTRA LIGHT

Intensively reduces skin sensitivity, day after day
40 ml



For normal to combination skin

TOLERIANE Soothing Protective Skincare

Soothes irritation. Provides lasting hydration
40 ml



For combination to oily skin
TOLERIANE FLUIDE

Soothing Protective Non-oily Emulsion

Moisturises and helps to reduce irritation. Neutralises drying effects of hard water
40 ml



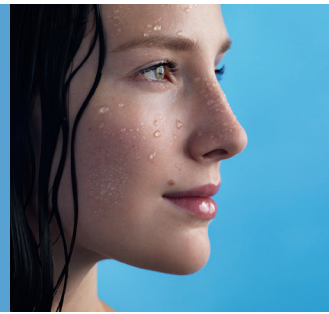


ACNE-PRONE / OILY SKIN

EFFACLAR

Comprehensive range to cleanse and transform signs of oily skin

25 years
Dermatological Expertise in Oily Skin



DEHYDRATED SKIN

HYDRAPHASE

Intense rehydrating skincare for long-lasting efficacy



cleanse

EFFACLAR Purifying Foaming Gel

Thoroughly cleanses and purges impurities
200 ml



EFFACLAR H Dermo-Soothing Deep Cleansing Foam

Skin undergoing over-drying treatments is cleansed, purified, supple and comfortable
150 ml



treat

EFFACLAR K Renovating Care for Oily Skin

The skin is finer, clearer and softer to the touch
30 ml



EFFACLAR DUO Corrective & Unclogging Anti-Imperfection Care

Eliminates severe imperfections and unclogs sebum-blocked pores while keeping skin hydrated
40 ml



treat

EFFACLAR A.I. Targeted Breakout Corrector

Minimises or eliminates blemishes, promoting an even complexion
15 ml



moisturise

EFFACLAR MAT Sebo-Regulating Moisturiser

Smooth and matte, the skin is intensely moisturised
40 ml



EFFACLAR H Multi-compensating Soothing Moisturiser

Skin undergoing over-drying treatments is soothed and intensely hydrated
40 ml



treat

HYDRAPHASE INTENSE MASQUE Soothing Rehydrating Mask

Deeply hydrated skin becomes soft, supple and comfortable
50 ml



HYDRAPHASE INTENSE EYES Highly Moisturising Eye Serum

Hydration to smoothen fine lines and anti-puffiness around eyes
15 ml



moisturise

HYDRAPHASE INTENSE LIGHT

Provides instant and long-lasting hydration. Non-oily and light in texture
50 ml



HYDRAPHASE INTENSE SERUM Concentrated Rehydrating Serum

Rehydrates sensitive skin. Reduces skin tightness
30 ml



UNEVEN SKIN TONES

SENSI WHITE

Whitening for sensitive Asian skin
Skincare to lighten dark spots to gain a brighter and clearer complexion

cleanse

SENSI WHITE Foaming Cream

Deeply cleanses skin and leaves it soft, brighter and more homogeneous.
125 ml



tone

SENSI WHITE Lotion

Soothes, brightens and prepares skin for whitening care
200 ml



treat

SENSI WHITE Essence

Brown spots reduced. Skin is brighter and luminous
30 ml



moisturise

SENSI WHITE Cream

Skin looks brighter, shine-free, with healthy radiance and boosted luminosity
50 ml



SENSI WHITE Emulsion

Mattifying and hydrating with healthy radiance and boosted luminosity
50 ml





AGING SKIN

ACTIVE C

For fine lines and wrinkles

- » -50% in fine lines and wrinkles
- » +17% in firmness and elasticity of the skin



BODY

LIPIKAR / CERALIP

20 years' experience in treating atopic dry skin

treat

ACTIVE C EYES

Corrective Dermatological Care For Wrinkles

Minimises fine lines and wrinkles
Reduces dark circles
15 ml



For normal to combination skin

ACTIVE C

Corrective Dermatological Care For Wrinkles

Significantly reduces fine lines and wrinkles
Smooths uneven complexion
30 ml



moisturise

LIPIKAR

Lipid-replenishing Body Milk

Restores hydrolipidic layer
Silky, light texture
For children and adults
200 ml



CERALIP

Lipid Repair Cream

Heals and protects severely dry lips
Restores comfort
Minimises risk of irritation
15 ml



AGED SKIN

REDERMIC [C]

For deep wrinkles

- » -12% Crow's feet wrinkles (from 4 weeks)
- » +17% Firmness
- » +33% Tone
- » +30% 24H Hydration

* in-vitro test



IRRITATED / ALTERED SKIN

CICAPLAST

Epidermal repair accelerator

- » Accelerates the reconstruction of irritated, chapped epidermises and after minor dermatological procedures

treat

REDERMIC [C] EYES

Anti-aging Sensitive Eyes Fill-in Care

Skin's firmness is improved, lines appear faded and deep wrinkles are reduced
Eye contour is evened out
15 ml



REDERMIC [C]

Anti-aging Sensitive Skin Fill-in Care

Signs of aging will be visibly reduced
Wrinkles are corrected and skin regains firmness
40 ml



treat

CICAPLAST

Pro-recovery Skincare

Skin is relieved and protected
Skin is free to recover more rapidly
40 ml

